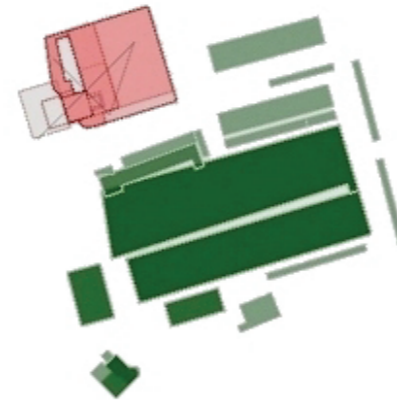




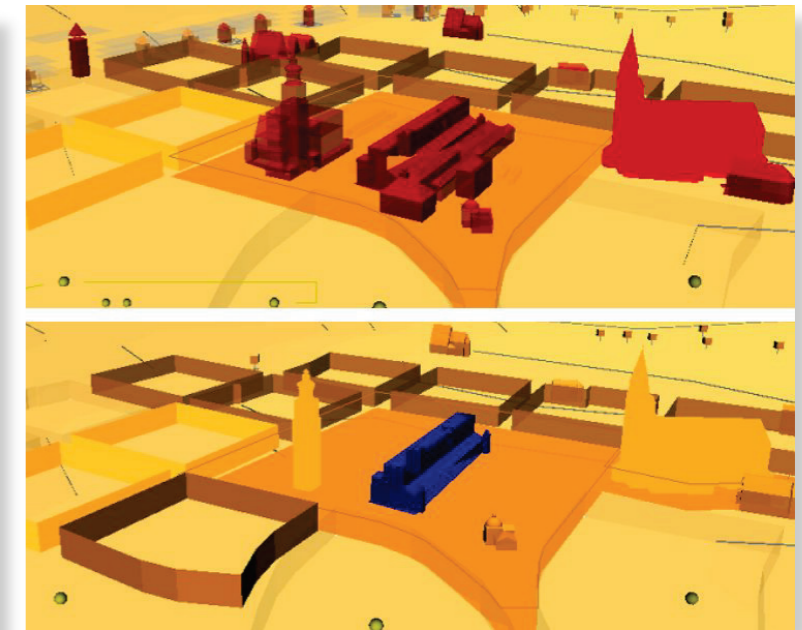
hypothetical reconstructions >

diachronic study

VIA / SOL2 - Knowledge management and visualisation platform for the architectural heritage
2006 - 2008



1300-1316	(239)
1350-1399	(364)
1454-1454	(365)
1547-1547	(366)
1561-1563	(367)
1580-1595	(658)
1610-1610	(686)
1632-1632	(659)
1636-1636	(660)
1678-1678	(368)
1680-1680	(369)
1681-1686	(370)
1782-1782	(371)
1783-1784	(372)
1817-1820	(373)
1864-1866	(661)
1881-1882	(374)
1888-1888	(375)
1946-1946	(376)
1961-1967	(662)
1983-1987	(663)



1503



1654



1894



1994



hypothetical reconstructions >

VIA - Knowledge management and visualisation platform for the architectural heritage, 2001 - 2012

DOCUMENTATION

represented form corresponds to the date of the query



represented form is this of a later version



represented form is this of a preceding version



UNCERTAINTY

documented

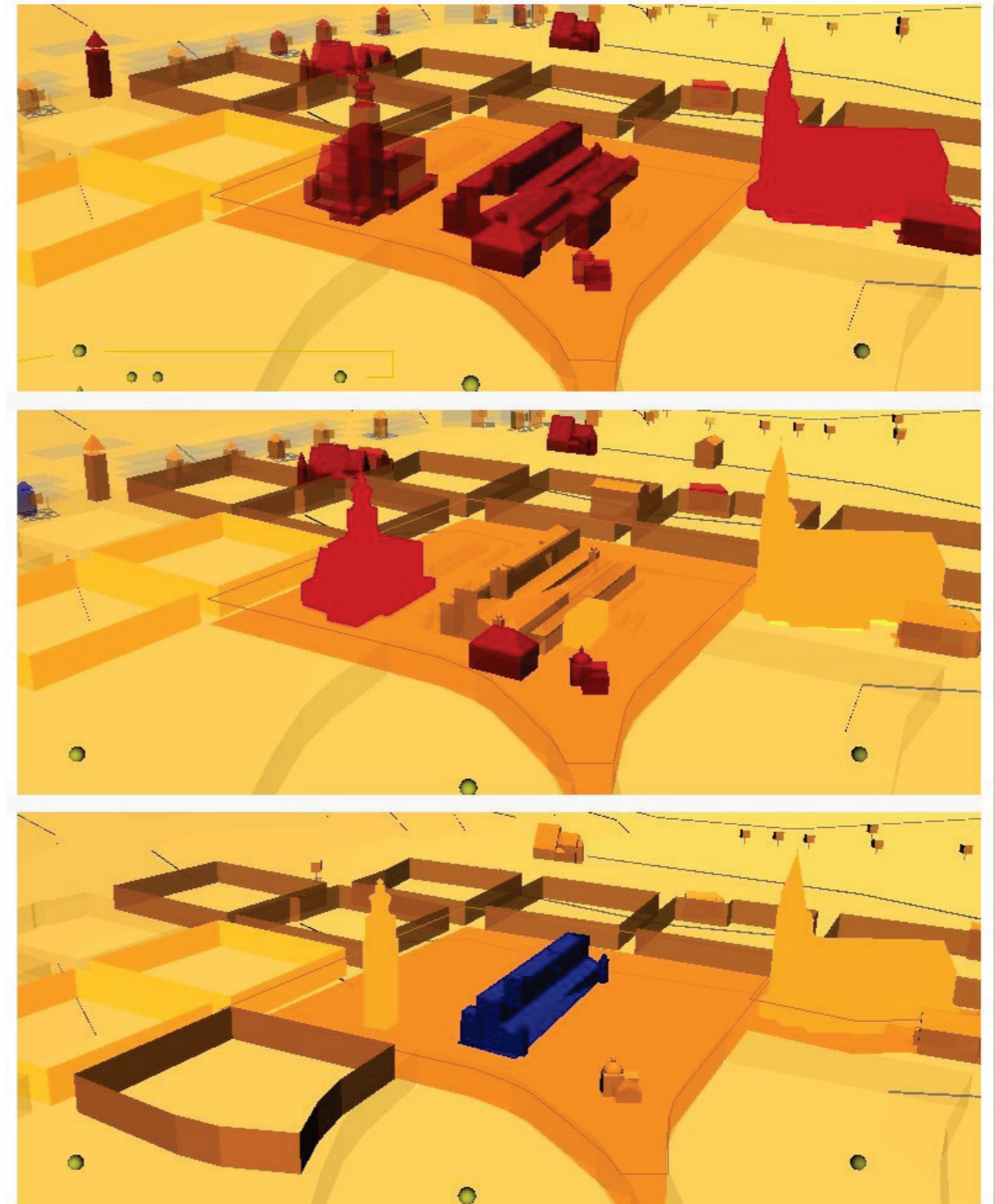
hypothetical

to be précised

non established credibility



Emissive colouring





hypothetical reconstructions >

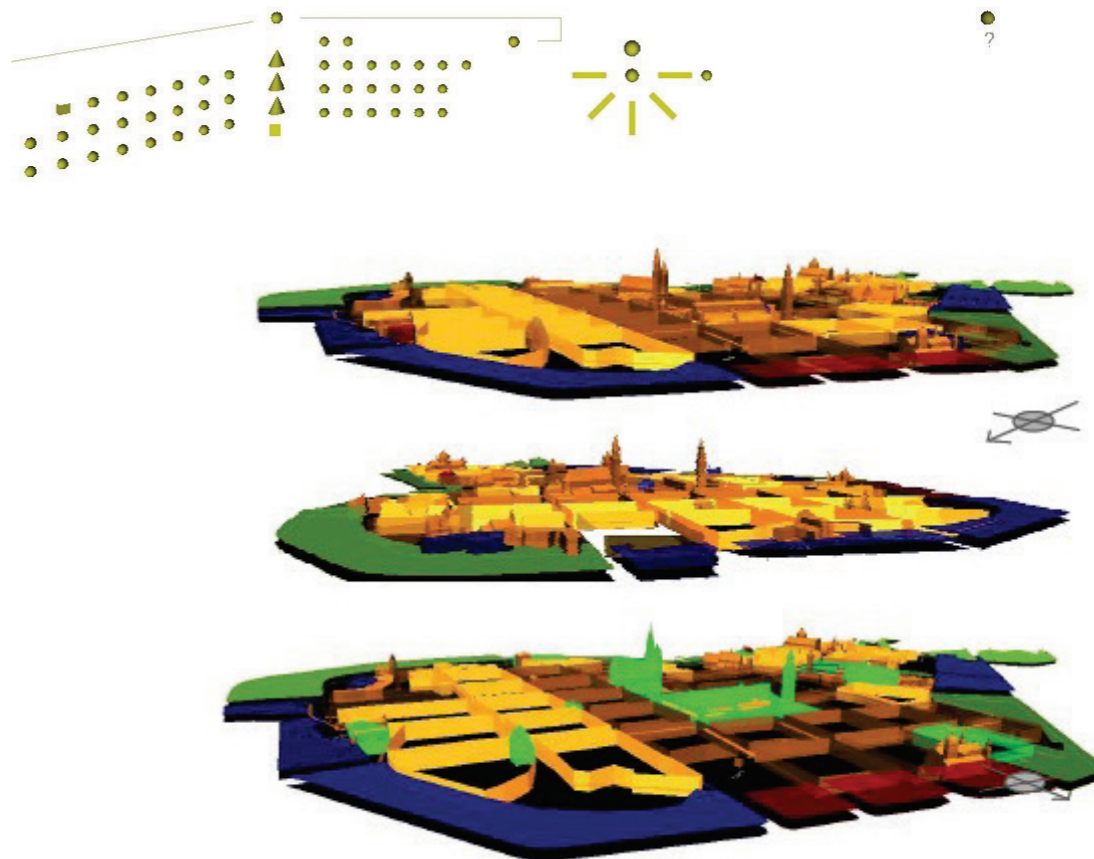
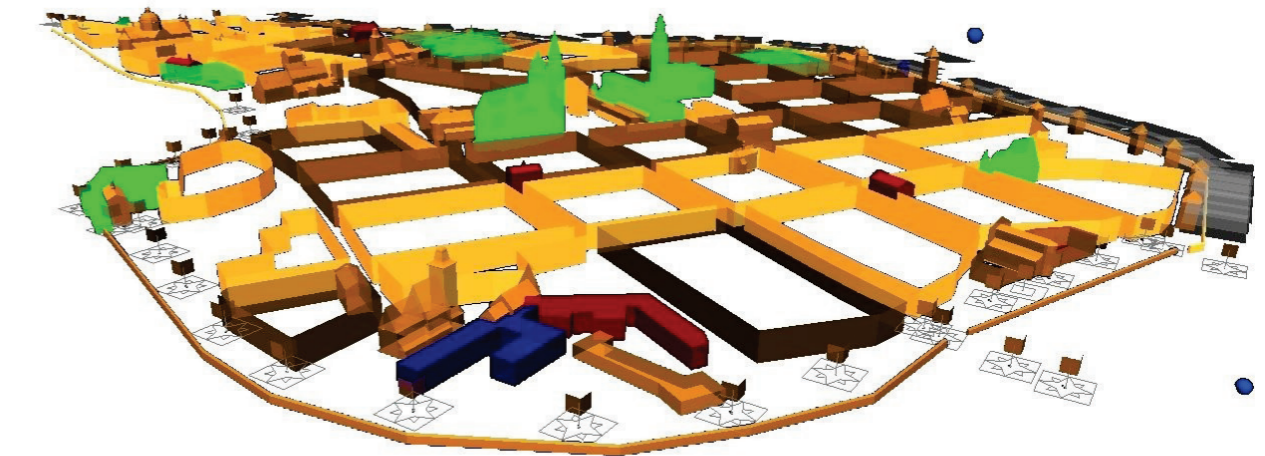
VIA - SOL2 - 2D/3D visualisation of changes in the urban fabric 2002 -2004

A 3D VRML visualisation, produced on the fly for a user-chosen date.

It combines interfacing capacities and a visual encoding of a variety of parameters:

- typology,
- synchronicity indicator (of the user-chosen data with the 3D model of edifices),
- documentary status.

The 3D VRML visualisation builds on a catalogue parametric entities dedicated to the architecture of Cracow, and includes an interactive time slider.





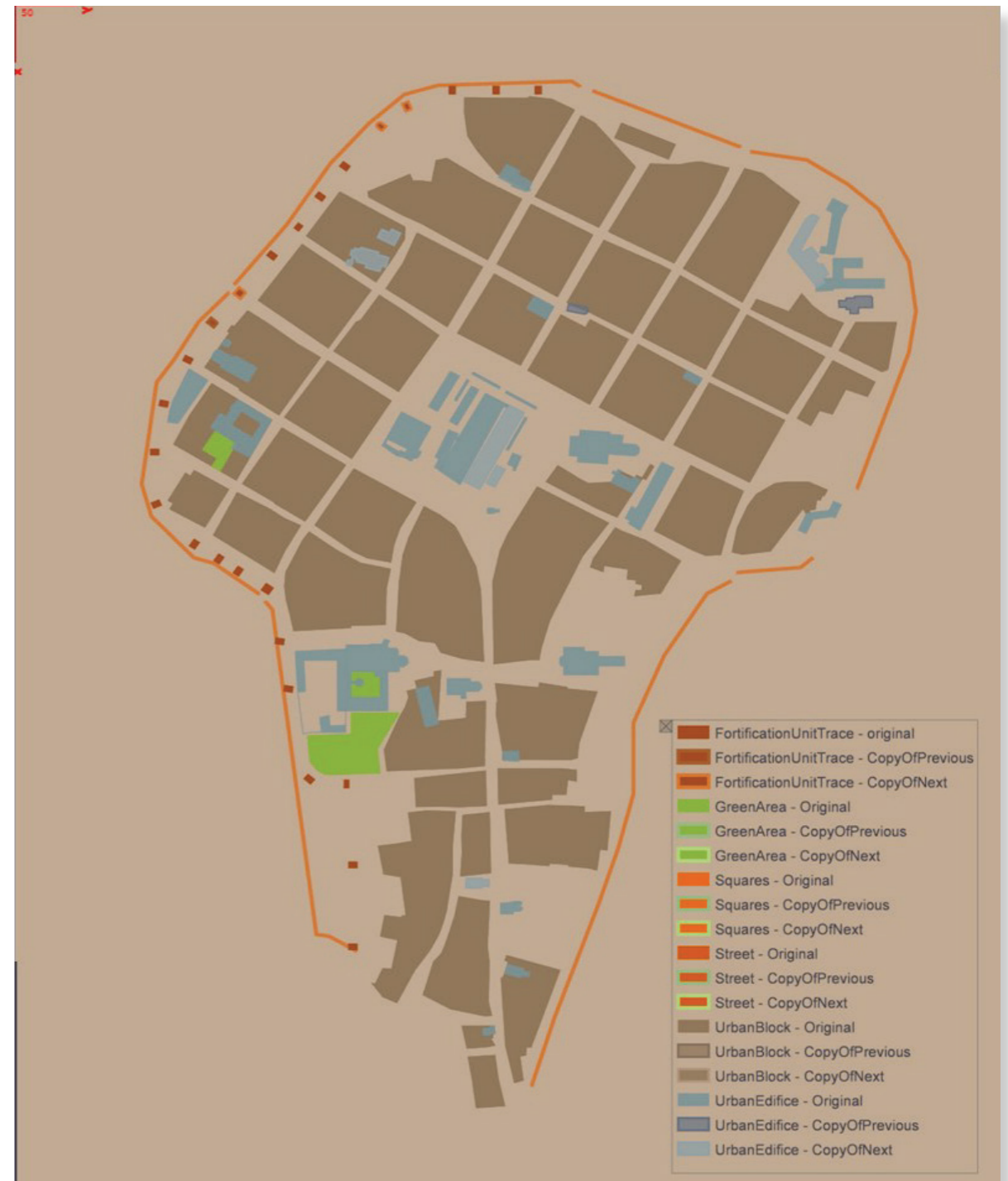
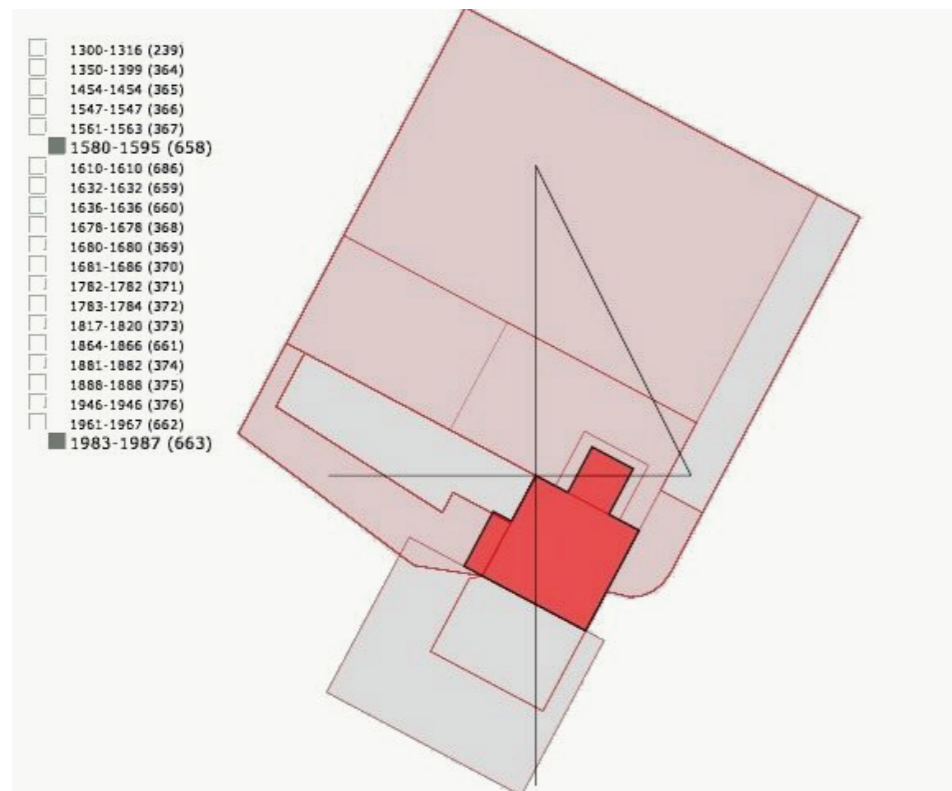
hypothetical reconstructions >

VIA- SOL - 2D/3D visualisation of changes in the urban fabric 2002-2004

A 2D SVG visualisation, produced on the fly for a user-chosen date.

It combines interfacing capacities and a visual encoding of a variety of parameters:

- typology,
- synchronicity indicator (of the user-chosen data with the 3D model of edifices),
- documentary status.



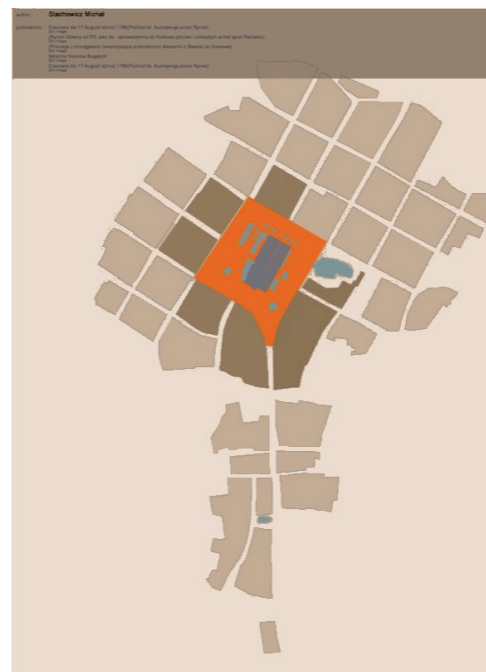
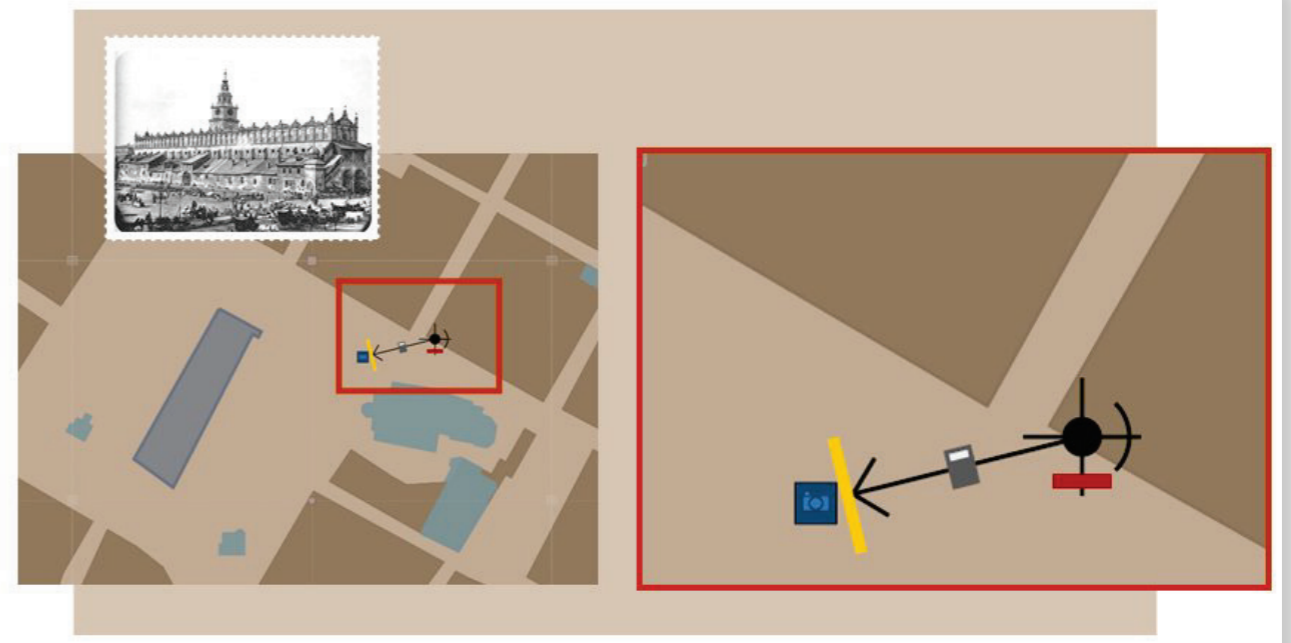


hypothetical reconstructions >

VIA-SOL 2 - *Visual encoding of reliability and densities of historical evidences*
2007

This visualisation builds on an interactive SVG cartography through which artefacts are positioned, and give access to documentary sources.

The cartography is then used to visualise the architectural content of a given source, of a group of sources, of the works of an author, *etc.* : all corresponding artefacts are highlighted.





hypothetical reconstructions >

VIA-SOL 2 - *Visual encoding of reliability and densities of historical evidences*

2007

This visualisation builds on an interactive SVG cartography through which artefacts are positioned, and give access to documentary sources.

The cartography includes a visual encoding of the reliability of the information extracted from documents, letting analysts to weigh and compare levels of knowledge and understanding across the collection of artefacts.

Documents available for each artefact are analysed in terms of type and in terms of time distribution so as to assess visually a sort-of density of historical evidences.

